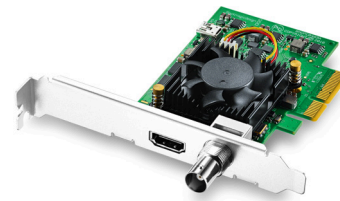


DeckLink Mini Recorder 4K



DeckLink Mini Recorder 4K is a low profile PCI Express capture card, featuring 6G-SDI and the latest HDMI 2.0a connections so you can record all formats up to 2160p30 on your computer! The SDI and HDMI inputs automatically detect and switch between all video formats. You even get high dynamic range recording and metadata over HDMI. The DeckLink Mini Recorder 4K is perfect for integrating into mobile live capture environments, broadcast trucks and more! You can even develop your own custom capture solutions using the Blackmagic Desktop Video SDK for Mac OS, Windows and Linux! Includes two PCI Express shields for both full height and low profile slots.

2 200 kr

Connections

SDI Video Inputs

1 x 10-bit SD/HD/Ultra HD switchable.

SDI Audio Inputs

16 channels embedded in SD, HD, Ultra HD.

HDMI Video Inputs

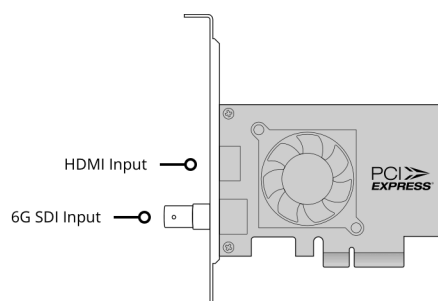
1 x HDMI 2.0a connector.

HDMI Audio Inputs

8 Channels embedded in SD, HD, Ultra HD.

Computer Interface

PCI Express 4 lane generation 2, compatible with 4, 8 and 16 lane PCI Express slots.



Supported Codecs

AVC-Intra, AVCHD, Canon XF MPEG2,
Digital SLR, DV-NTSC, DV-PAL,
DVCPRO50, DVCPROHD, DPX, HDV,
XDCAM EX, XDCAM HD, XDCAM
HD422, DNxHR & DNxHD, Apple
ProRes 4444, Apple ProRes 422 HQ,
Apple ProRes 422, Apple ProRes LT,
Apple ProRes 422 Proxy,
Uncompressed 8-bit 4:2:2,
Uncompressed 10-bit 4:2:2.

Software

Software Included

Media Express, Disk Speed Test,
LiveKey, Blackmagic Desktop Video
Utility and Blackmagic driver on Mac
OS and Windows. Media Express,
Blackmagic Desktop Video Utility and
Blackmagic driver on Linux.

Internal Software Upgrade

Firmware built into software driver.
Loaded at system start or via updater
software.

Physical Installation

PCI Express 4 lane generation 2,
compatible with 4, 8 and 16 lane PCI
Express slots on Mac OS, Windows
and Linux. Mac OS systems require a
Mac Pro computer with PCI Express
slots. Please check the Support pages
to see the full system requirements.

Software Applications



DaVinci Resolve



Adobe Premiere Pro CC



Avid Media Composer



Adobe Photoshop CC

Other supported applications include: Tools On Air Just: Play & Live & In, Softron MovieRecorder & MReplay, Adobe Flash Media Live Encoder, Telestream Wirecast, Resolume Arena, Magix Vegas Pro & Movie Edit Pro Premium, Corel VideoStudio Pro, CyberLink PowerDirector, Vidblaster X & Studio & Broadcast, Uniplay One & CG, CasparCG Server, Magicsoft CG, Xsplit Broadcaster, Imagine Communications Velocity & InfoCaster, DevTek Easy Media Suite, Metus Ingest, Boinx Software MimoLive, Cinegy Capture Pro, vMix Live, Renewed Vision ProPresenter, Ventuz Director, Class X Liveboard & Coral CG, Glomast Capturer, Open Broadcaster Software Studio, Nautilus NEMO3D, Burst Video WebClip2Go & [REC]Marker, Zoom. These are third party applications and support may vary, check with your software vendor.

Video Standards

SD Video Standards

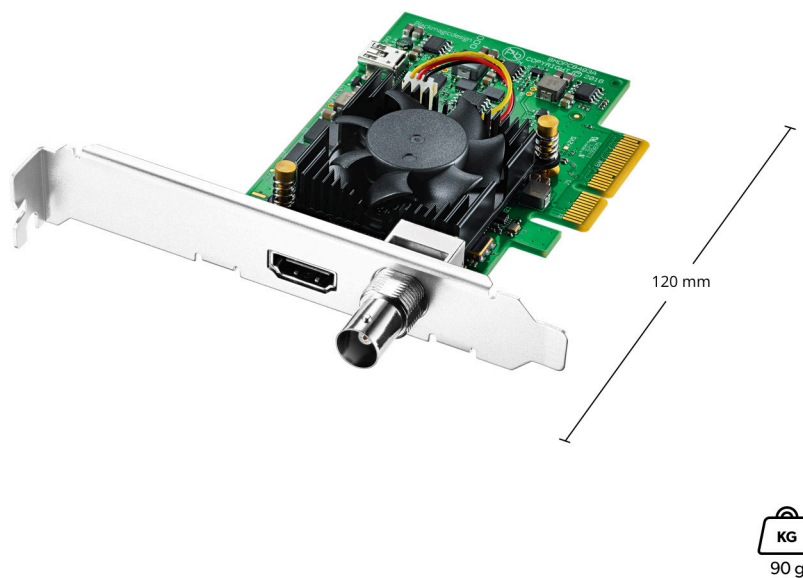
525i59.94 NTSC, 625i50 PAL

HD Video Standards 720p50, 720p59.94, 720p60 1080p23.98, 1080p24, 1080p25, 1080p29.97, 1080p30, 1080p50, 1080p59.94, 1080p60 1080PsF23.98, 1080PsF24, 1080PsF25, 1080PsF29.97, 1080PsF30 1080i50, 1080i59.94, 1080i60 2K Video Standards (SDI ONLY) 2K DCI 23.98p, 2K DCI 24p, 2K DCI 25p 2K DCI 23.98PsF, 2K DCI 24PsF, 2K DCI F25PsF Ultra HD Video Standards 2160p23.98, 2160p24, 2160p25, 2160p29.97, 2160p30 4K DCI Video Standards 4K DCI 23.98p, 4K DCI 24p, 4K DCI 25p.	SDI Compliance SMPTE 259M, SMPTE 292M, SMPTE 296M, SMPTE 372M, SMPTE 425M, SMPTE 2081, ITU-R BT.656 and ITU-R BT.601. SDI Metadata Support RP 188/SMPTE 12M-2 and closed captioning. Audio Sampling Television standard sample rate of 48 kHz and 24 bit. SDI Video Sampling 4:4:4 & 4:2:2 SDI Color Precision 8, 10, 12-bit RGB 4:4:4 in all modes up to 1080p60, and 8, 10-bit YUV 4:2:2 in all modes. Color Space REC 601, REC 709, REC 2020. SDI HDR Support HDR static metadata packing, HLG and PQ transfer characteristics.	HDMI Video Sampling 4:4:4, 4:2:2 & 4:2:0 HDMI Configuration HDMI 2.0a supports Deep Color and HDR. HDMI Color Precision Up to 12-bit (Deep Color) HDMI HDR Support HDR static metadata packing, HLG and PQ transfer characteristics. Multiple Rate Support HDMI and SDI video connections are switchable between SD/HD/2K and 4K. Copy Protection HDMI input is unable to capture from copy protected HDMI sources. Always confirm copyright ownership before capture or distribution of content.
---	--	---

Processing

Colorspace Conversion Hardware based real time.	HD to SD Down Conversion Software based down conversion during video capture.	HD Up Conversion Built in, high quality software up converter from SD to HD on input. Selectable between 16:9 Zoom or anamorphic.
---	--	--

Physical Specifications



Operating Systems



Mac 14.0 Sonoma,
Mac 15.0 Sequoia or later.



Windows 10, 64-bit.
Windows 11.



Linux

Power Requirements

Power Consumption

8 W

Environmental Specifications

Operating temperature

5° to 40° C (32° to 104° F)

Storage temperature

-20° to 45° C (-4° to 113° F)

Relative Humidity

0% to 90% non-condensing

What's Included

DeckLink Mini Recorder 4K
Low profile slot bracket

Warranty

3 Year Limited Manufacturer's Warranty.

All items on this website are copyright Blackmagic Design Pty. Ltd. 2025, all rights reserved.

All trademarks are property of their respective owners. MSRP excludes VAT and shipping costs.

This website uses remarketing services to advertise on third party websites to previous visitors to our site.

You can opt out at any time by changing cookie settings. [Privacy Policy](#)

Blackmagic Design Authorized Reseller