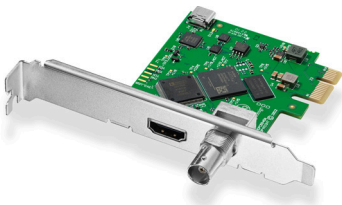


DeckLink Mini Monitor HD



Get broadcast quality HDMI and SDI video playback and monitoring from your PCIe computer! DeckLink Mini Monitor HD includes 3G-SDI and HDMI 2.0 that let you connect to any television, monitor or projector for broadcast monitoring, including the latest high dynamic range (HDR) formats! Works with software such as DaVinci Resolve, Final Cut Pro and more.

1 500 kr

Connections

SDI Video Output

1 x 10-bit SD/HD switchable

SDI Rates

270Mb, 1.5G, 3G

SDI Audio Output

16 channels embedded in SD/HD

HDMI Video Output

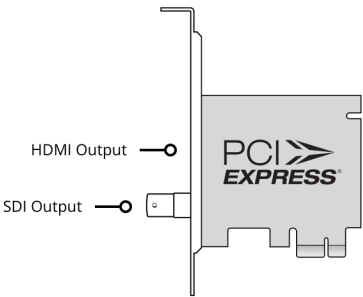
1 x HDMI 2.0 type A connector

HDMI Audio Output

8 channels embedded in SD/HD

Computer Interface

PCI Express 1 lane generation 2, compatible with 1, 4, 8 and 16 lane PCI Express slots.



Supported Codecs

AVC-Intra, AVCHD, Canon XF MPEG2,
Digital SLR, DV-NTSC, DV-PAL,
DVCPRO50, DVCPROHD, DPX, HDV,
HEVC, XDCAM EX, XDCAM HD, XDCAM
HD422, DNxHR & DNxHD, Apple
ProRes 4444, Apple ProRes 422 HQ,
Apple ProRes 422, Apple ProRes 422
LT, Apple ProRes 422 Proxy,
Uncompressed 8-bit 4:2:2,
Uncompressed 10-bit 4:2:2,
Uncompressed 10-bit 4:4:4.

Software

Software Included

Media Express, Disk Speed Test,
LiveKey, Blackmagic Desktop Video
Utility and Blackmagic driver on
Mac OS and Windows. Media Express,
Blackmagic Desktop Video Utility and
Blackmagic driver on Linux.

Internal Software Upgrade

Firmware built into software driver.
Loaded at system start or via
updater software.

Physical Installation

PCI Express 1 lane generation 2,
compatible with 1, 4, 8 and 16 lane
PCI Express slots on Mac OS,
Windows and Linux. Mac OS systems
require a Mac Pro computer with PCI
Express slots. Please check the
Support pages to see the full
system requirements.

Software Applications



DaVinci Resolve



Fusion



Final Cut Pro



Adobe Premiere Pro CC



Avid Media Composer



Adobe After Effects CC



Avid Pro Tools



Steinberg Cubase



Steinberg Nuendo



Adobe Photoshop CC

Other supported applications include:

The Foundry Nuke, Sony Catalyst Production Suite, Tools On Air Just: Play & Live, Magix Movie Edit Pro Premium, Corel VideoStudio Pro, CyberLink PowerDirector, Grass Valley Edius, Softtron Mreplay, Telestream Wirecast, Resolume Arena, Vegas Creative Software Vegas Pro, VidblasterX Studio and Broadcast, Unimedia Technologies UniplayOne and Uniplay-CG, CasparCG Server, Magicsoft CG, Xsplit Broadcaster, DevTek Easy Media Suite, Boinx Software MimoLive, StudioCoast vMix, Renewed Vision ProPresenter, Ventuz Director, Class X Liveboard and CoralCG, Open Broadcaster Software Studio, Nautilus Studio Nemo3D, Burst Video Webclip2Go, Derivative TouchDesigner, Assimilate Scratch and Live Assist, NewBlue Title Live and

Titler Pro,

SGO Mistika.

These are third party applications and support may vary, check with your software vendor.

SDI Video Standards

SDI Video Standards

525i59.94 NTSC, 625i50 PAL

HD Video Standards

720p50, 720p59.94, 720p60
1080p23.98, 1080p24, 1080p25,
1080p29.97, 1080p30, 1080p50,
1080p59.94, 1080p60, 1080PsF23.98,
1080PsF24, 1080PsF25,
1080PsF29.97, 1080PsF30
1080i50, 1080i59.94, 1080i60

2K Video Standards

2Kp23.98 DCI, 2Kp24 DCI, 2Kp25 DCI,
2Kp29.97 DCI, 2Kp30 DCI, 2Kp50 DCI,
2Kp59.94 DCI, 2Kp60 DCI
2KPsF23.98 DCI, 2KPsF24 DCI,
2KPsF25 DCI, 2KPsF29.97 DCI,
2KPsF30 DCI

SDI Compliance

SMPTE 259M, SMPTE 274M,
SMPTE 296M, SMPTE 424M,
SMPTE 425M A/B and
SMPTE ST2108-1

SDI Metadata Support

RP 188/SMPTE 12M-2 and closed
captioning.

SDI Audio Sampling

Television standard sample rate of 48
kHz and 24-bit.

SDI Video Sampling

4:2:2, 4:4:4

SDI Color Precision

8, 10, 12-bit RGB 4:4:4 up to 1080p30,
and 8, 10-bit YUV 4:2:2 in all
standards.

SDI Color Space

REC 601, REC 709 and REC 2020

SDI HDR Support

HDR metadata packing, HLG and PQ transfer characteristics.

Multiple Rate Support

SDI video connection is switchable between SD and HD.

HDMI Video Standards

SDI Video Standards

525i59.94 NTSC, 625i50 PAL

HD Video Standards

720p50, 720p59.94, 720p60
1080p23.98, 1080p24, 1080p25,
1080p29.97, 1080p30, 1080p50,
1080p59.94, 1080p60, 1080i50,
1080i59.94, 1080i60

HDMI Audio Sampling

Television standard sample rate of 48 kHz and 24 bit.

HDMI Video Sampling

4:2:2 and 4:4:4

HDMI Color Precision

10, 12-bit RGB 4:4:4 up to 1080p30,
8-bit RGB 4:4:4 and 12-bit YUV 4:2:2 in
all standards.

HDMI Configuration

HDMI 2.0 supports Deep Color and
HDR. Automatically configures to
connected display.

HDMI Color Space

REC 601, REC 709 and REC 2020

HDMI HDR Support

HDR metadata packing, HLG and PQ transfer characteristics.

Multiple Rate Support

HDMI video connection is switchable between SD and HD.

Hardware Frame Buffer

v210 (10 bit YUV), 2vuy (8 bit YUV), ARGB, BGRA (8 bit RGB), r210 (10 bit RGB), R12B, R12L (12 bit RGB).

Processing

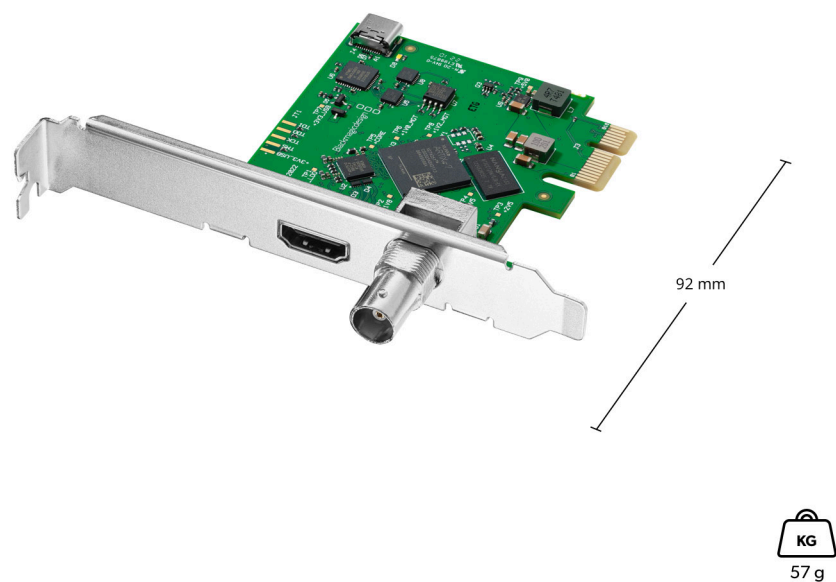
Real Time Effects

DaVinci Resolve, Final Cut Pro internal effects. Adobe Premiere Pro CC Mercury Playback Engine effects. Avid Media Composer internal effects.

Colorspace Conversion

Hardware based real time.

Physical Specifications



Operating Systems



Mac 14.0 Sonoma,
Mac 15.0 Sequoia or later.



Windows 10, 64-bit.
Windows 11.



Linux

Power Requirements

Power Consumption
3 W

Environmental Specifications

Operating Temperature
5° to 40° C (32° to 104° F)

Storage Temperature
-20° to 45° C (-4° to 113° F)

Relative Humidity
0% to 90% non-condensing

What's Included

DeckLink Mini Monitor HD
Low profile slot bracket

Warranty

3 Year Limited Manufacturer's Warranty.

All items on this website are copyright Blackmagic Design Pty. Ltd. 2025, all rights reserved.

All trademarks are property of their respective owners. MSRP excludes VAT and shipping costs.

This website uses remarketing services to advertise on third party websites to previous visitors to our site.

You can opt out at any time by changing cookie settings. [Privacy Policy](#)

Blackmagic Design Authorized Reseller